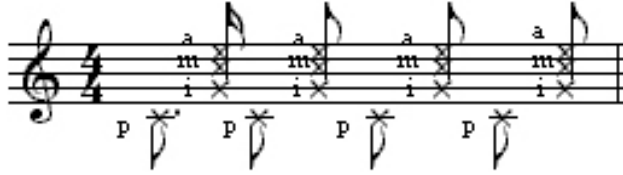


CADÊ?

Música integrante da peça infantil "Cadê?"
 Compasso: 4/4
 Tom: C
 ♩ = 120

Autora: Flávia Savary
 Ritmo: Marcha

Batida básica do violão:



Breque

Introdução: 4/4 || C | C ||

♩ | G7 | C | G7 | C |

Onde está? Cadê? Cadê ocê? Onde está? Cadê? Cadê ocê?

| G7 | C | G7 | C |
 Onde está? Cadê? Cadê ocê? Onde está? Cadê? Cadê ocê?

| F G | Em Am |
 Eu vim de longe, | de longos dias. |

| Dm G7 | Gm7 C7 |
 Procuro à noite, | também de dia. |

| F G | Em Am |
 Quem é que sabe | e quem me guia |

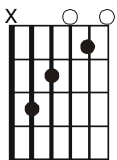
Breque

Breque

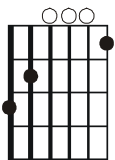
| Dm G7 | C | (ao ♩)

Para que eu ache nesse mundo o que perdi.

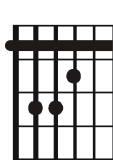
C



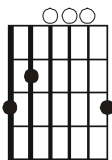
G7



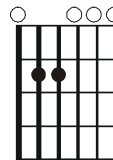
F



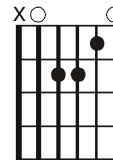
G



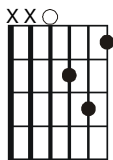
Em



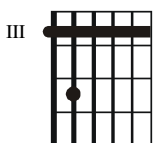
Am



Dm



Gm7



C7

